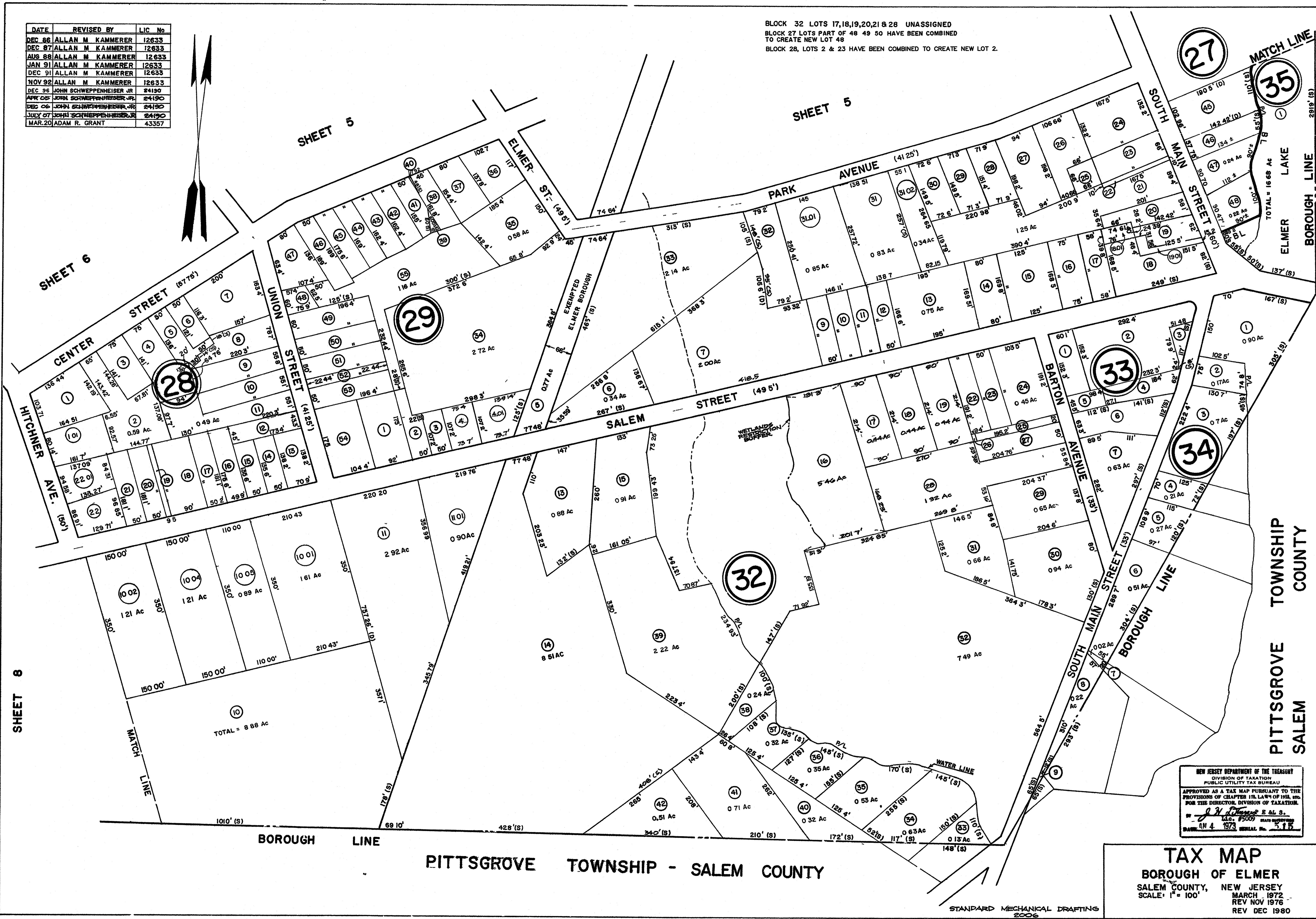


DATE	REVISED BY	LIC No
DEC 86	ALLAN M. KAMMERER	12633
DEC 87	ALLAN M. KAMMERER	12633
AUG 88	ALLAN M. KAMMERER	12633
JAN 91	ALLAN M. KAMMERER	12633
DEC 91	ALLAN M. KAMMERER	12633
NOV 92	ALLAN M. KAMMERER	12633
DEC 96	JOHN SCHWEPFENHEISER JR	24190
APR 05	JOHN SCHWEPFENHEISER JR	24190
DEC 06	JOHN SCHWEPFENHEISER JR	24190
JULY 07	JOHN SCHWEPFENHEISER JR	24190
MAR 20	ADAM R. GRANT	43357

BLOCK 32 LOTS 17,18,19,20,21 & 28 UNASSIGNED
 BLOCK 27 LOTS PART OF 48 49 50 HAVE BEEN COMBINED
 TO CREATE NEW LOT 48
 BLOCK 28, LOTS 2 & 23 HAVE BEEN COMBINED TO CREATE NEW LOT 2.



NEW JERSEY DEPARTMENT OF THE TREASURY
 DIVISION OF TAXATION
 PUBLIC UTILITY TAX BUREAU
 APPROVED AS A TAX MAP PURSUANT TO THE
 PROVISIONS OF CHAPTER 176, L.A.S. OF 1974, AND
 FOR THE DIRECTOR, DIVISION OF TAXATION.
 BY: *J. H. [Signature]* & A. S.
 L.S. 9505
 DATE: 4/14/1973 SERIAL No. 319

TAX MAP
 BOROUGH OF ELMER
 SALEM COUNTY, NEW JERSEY
 SCALE: 1" = 100'
 MARCH 1972
 REV NOV 1976
 REV DEC 1980

STANDARD MECHANICAL DRAFTING
 2006